

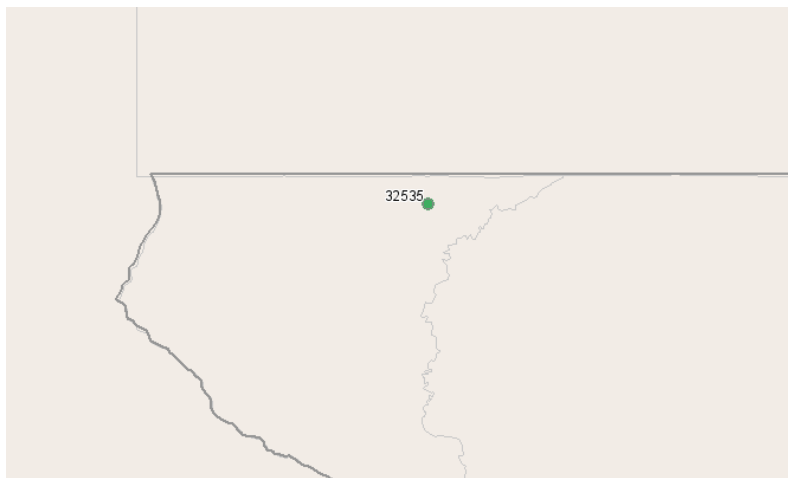
Florida's Great Northwest

4471 Legendary Drive, Suite 100

Destin, Florida 32541

850.337.3469

All Reports



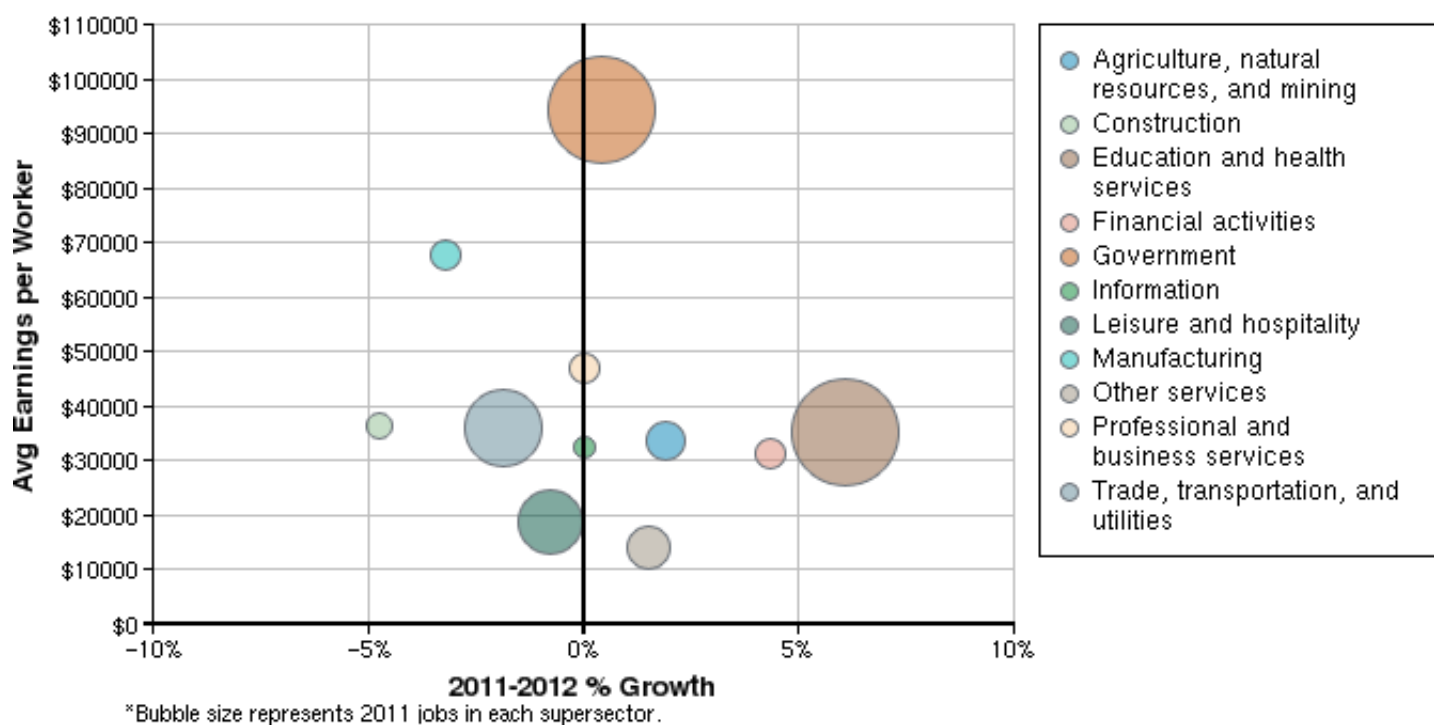
Region Info

Region: Century - 32535

ZIP Areas: 32535 (in Escambia county, Florida)

Industry Size and Growth

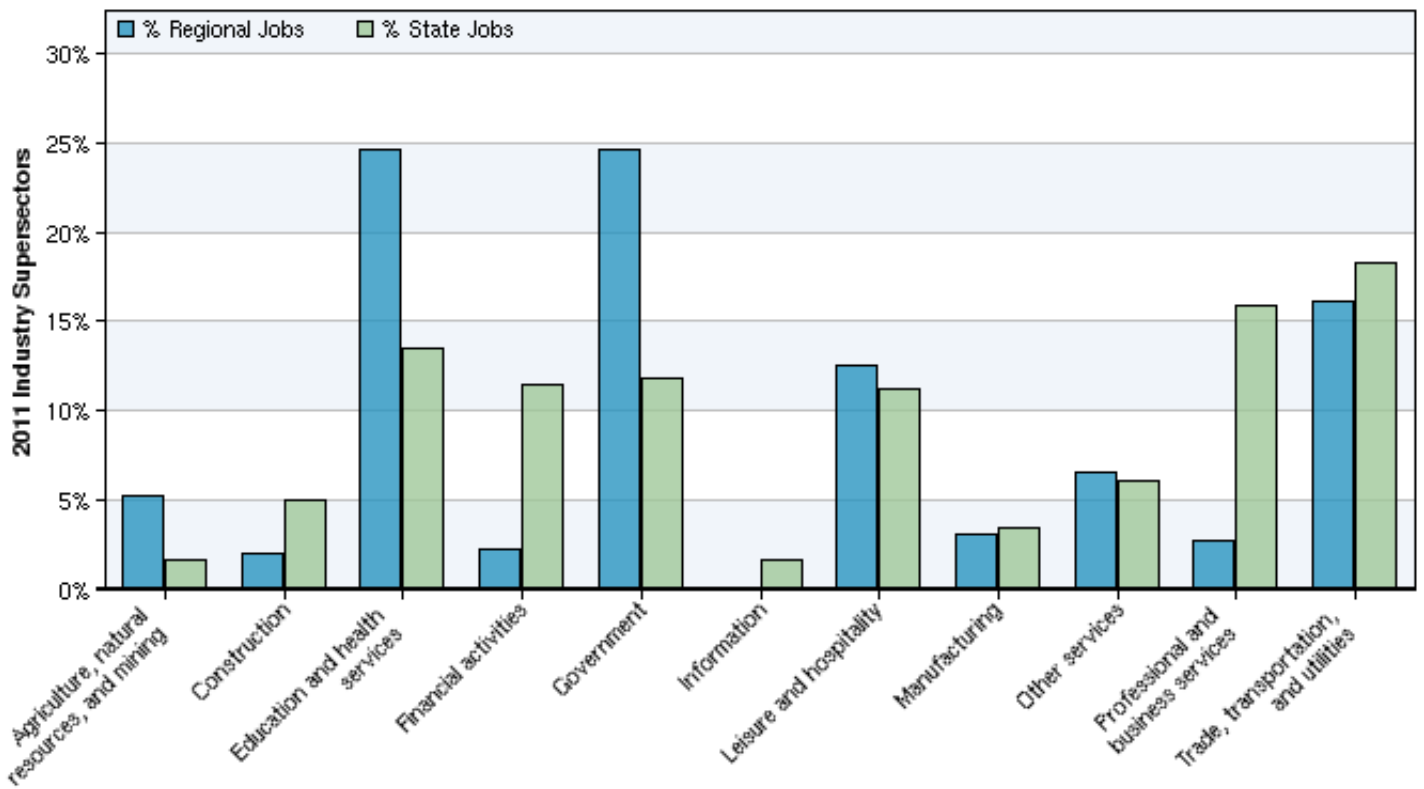
2011 - 2012 Size and Growth



Description	2011 Jobs	2012 Jobs	Growth	% Growth	2011 EPW
Agriculture, natural resources, and mining	53	54	1	2%	\$33,483
Construction	21	20	-1	-5%	\$36,465
Education and health services	247	262	15	6%	\$35,371
Financial activities	23	24	1	4%	\$31,320
Government	247	248	1	0%	\$94,505
Information	<10	<10	--	--	\$32,628
Leisure and hospitality	126	125	-1	-1%	\$18,908
Manufacturing	31	30	-1	-3%	\$67,583
Other services	66	67	1	2%	\$14,204
Professional and business services	28	28	0	0%	\$47,006
Trade, transportation, and utilities	162	159	-3	-2%	\$35,825
Total	1,006	1,018	12	1%	\$47,681

Source: EMSI Complete Employment - 2011.4

2011 Industrial Makeup

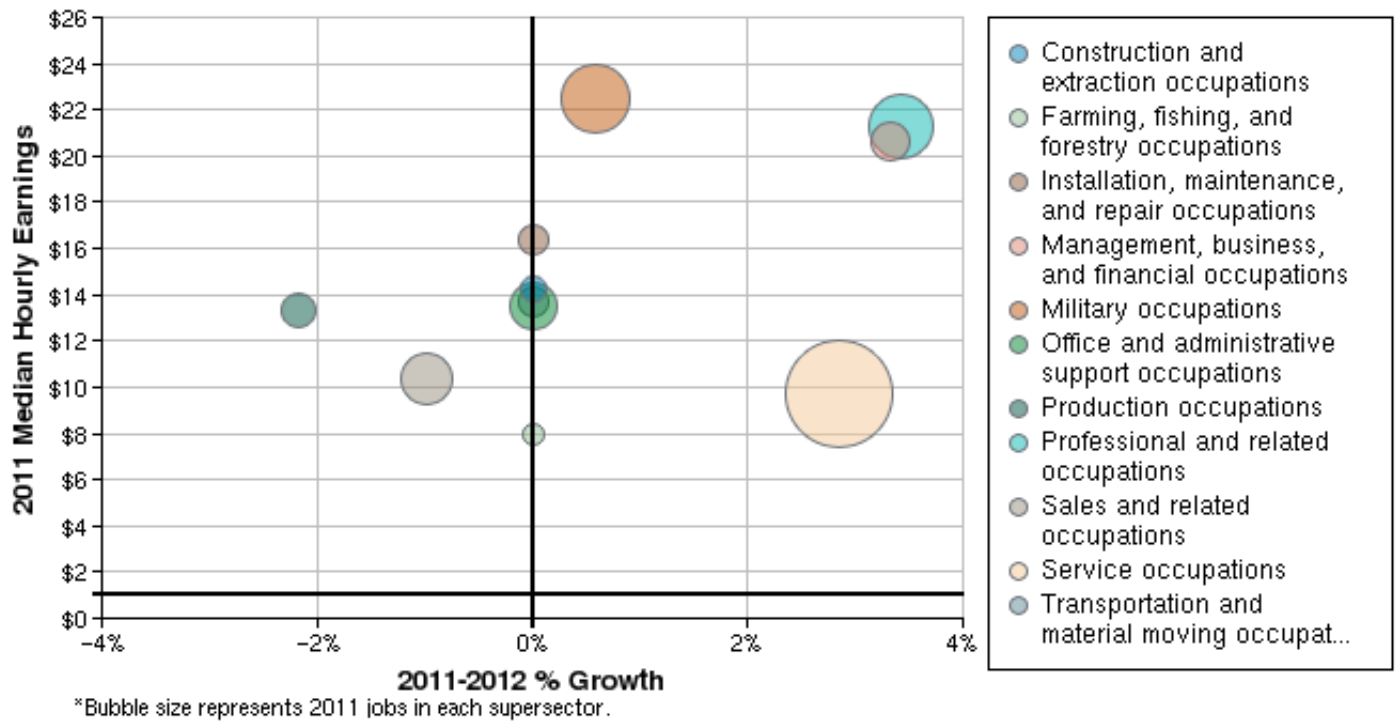


Description	2011 Regional Jobs	% Regional Jobs	2011 State Jobs	% State Jobs
Agriculture, natural resources, and mining	53	5.3%	165,769	1.7%
Construction	21	2.1%	488,804	5.0%
Education and health services	247	24.6%	1,314,618	13.4%
Financial activities	23	2.3%	1,122,936	11.5%
Government	247	24.6%	1,156,064	11.8%
Information	<10	--	161,352	1.7%
Leisure and hospitality	126	12.5%	1,093,927	11.2%
Manufacturing	31	3.1%	339,135	3.5%
Other services	66	6.6%	591,579	6.1%
Professional and business services	28	2.8%	1,554,206	15.9%
Trade, transportation, and utilities	162	16.1%	1,786,125	18.3%

Source: EMSI Complete Employment - 2011.4

Occupation Size and Growth

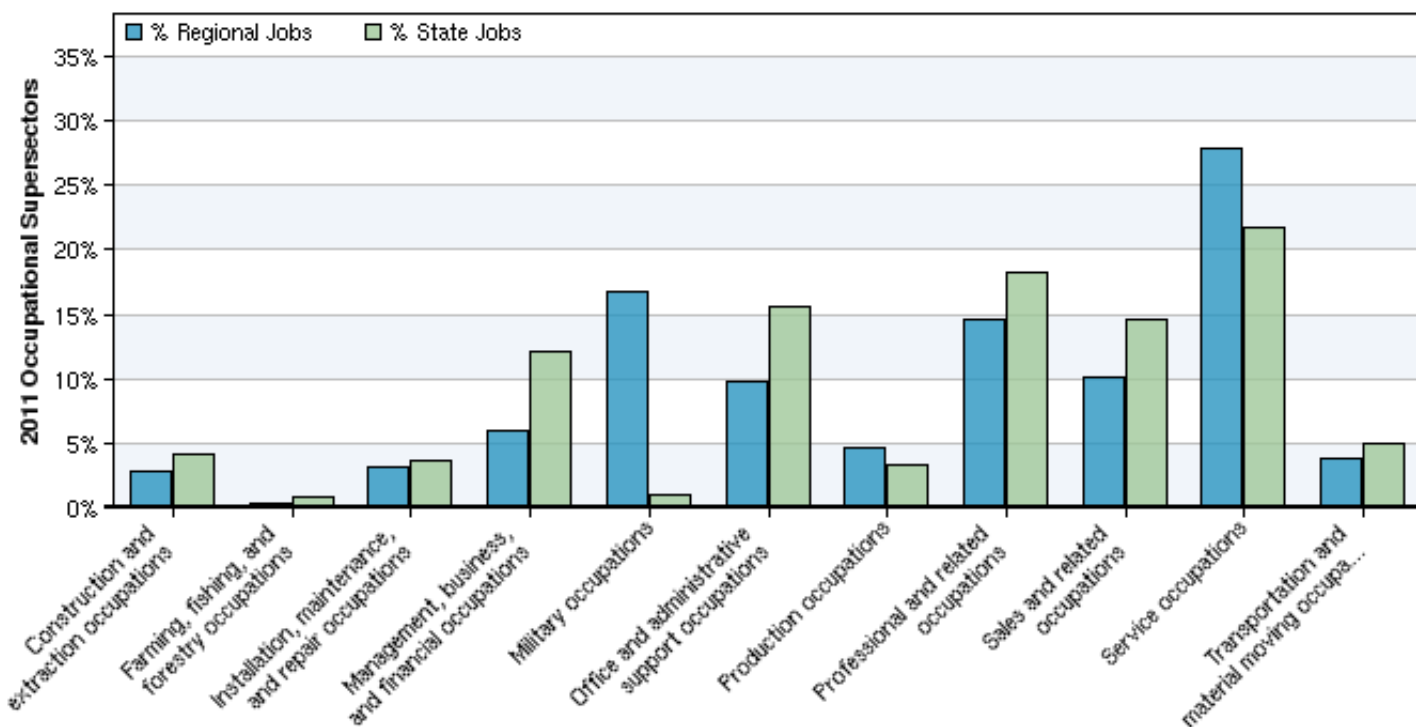
2011 - 2012 Size and Growth



Description	2011 Jobs	2012 Jobs	Growth	% Growth	2011 Median Hourly Earnings
Construction and extraction occupations	29	29	0	0%	\$14.28
Farming, fishing, and forestry occupations	<10	<10	--	--	\$7.98
Installation, maintenance, and repair occupations	32	32	0	0%	\$16.42
Management, business, and financial occupations	60	62	2	3%	\$20.60
Military occupations	169	170	1	1%	\$22.47
Office and administrative support occupations	98	98	0	0%	\$13.50
Production occupations	46	45	-1	-2%	\$13.31
Professional and related occupations	146	151	5	3%	\$21.31
Sales and related occupations	102	101	-1	-1%	\$10.32
Service occupations	281	289	8	3%	\$9.74
Transportation and material moving occupations	38	38	0	0%	\$13.66
Total	1,006	1,018	12	1%	\$15.28

Source: EMSI Complete Employment - 2011.4

2011 Occupational Makeup

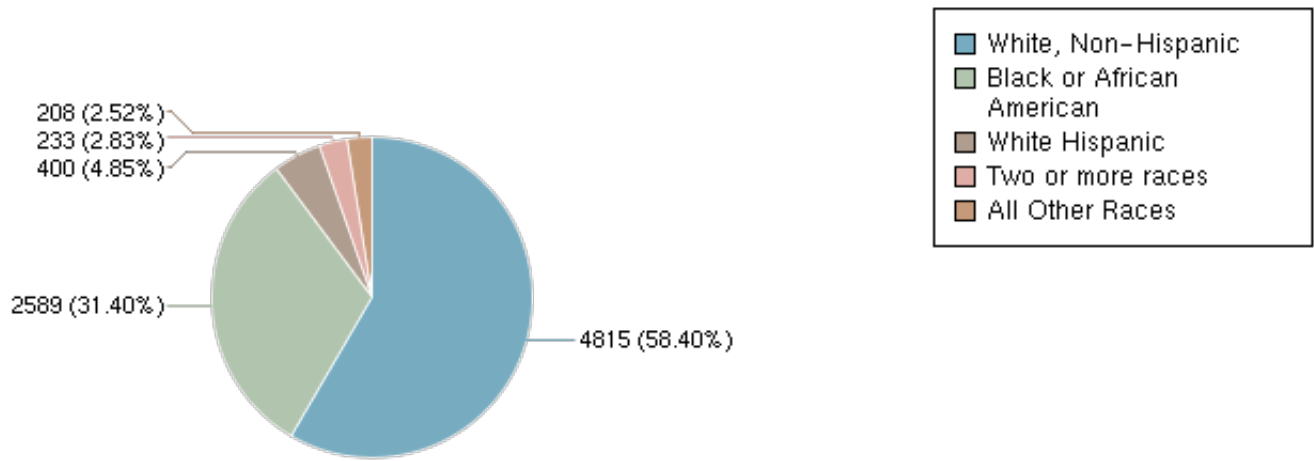


Description	2011 Regional Jobs	% Regional Jobs	2011 State Jobs	% State Jobs
Construction and extraction occupations	29	2.9%	402,194	4.1%
Farming, fishing, and forestry occupations	<10	--	73,752	0.8%
Installation, maintenance, and repair occupations	32	3.2%	351,485	3.6%
Management, business, and financial occupations	60	6.0%	1,188,759	12.2%
Military occupations	169	16.8%	93,185	1.0%
Office and administrative support occupations	98	9.7%	1,528,901	15.6%
Production occupations	46	4.6%	318,486	3.3%
Professional and related occupations	146	14.5%	1,788,142	18.3%
Sales and related occupations	102	10.1%	1,427,774	14.6%
Service occupations	281	27.9%	2,123,008	21.7%
Transportation and material moving occupations	38	3.8%	478,828	4.9%

Source: EMSI Complete Employment - 2011.4

Demographic Overview

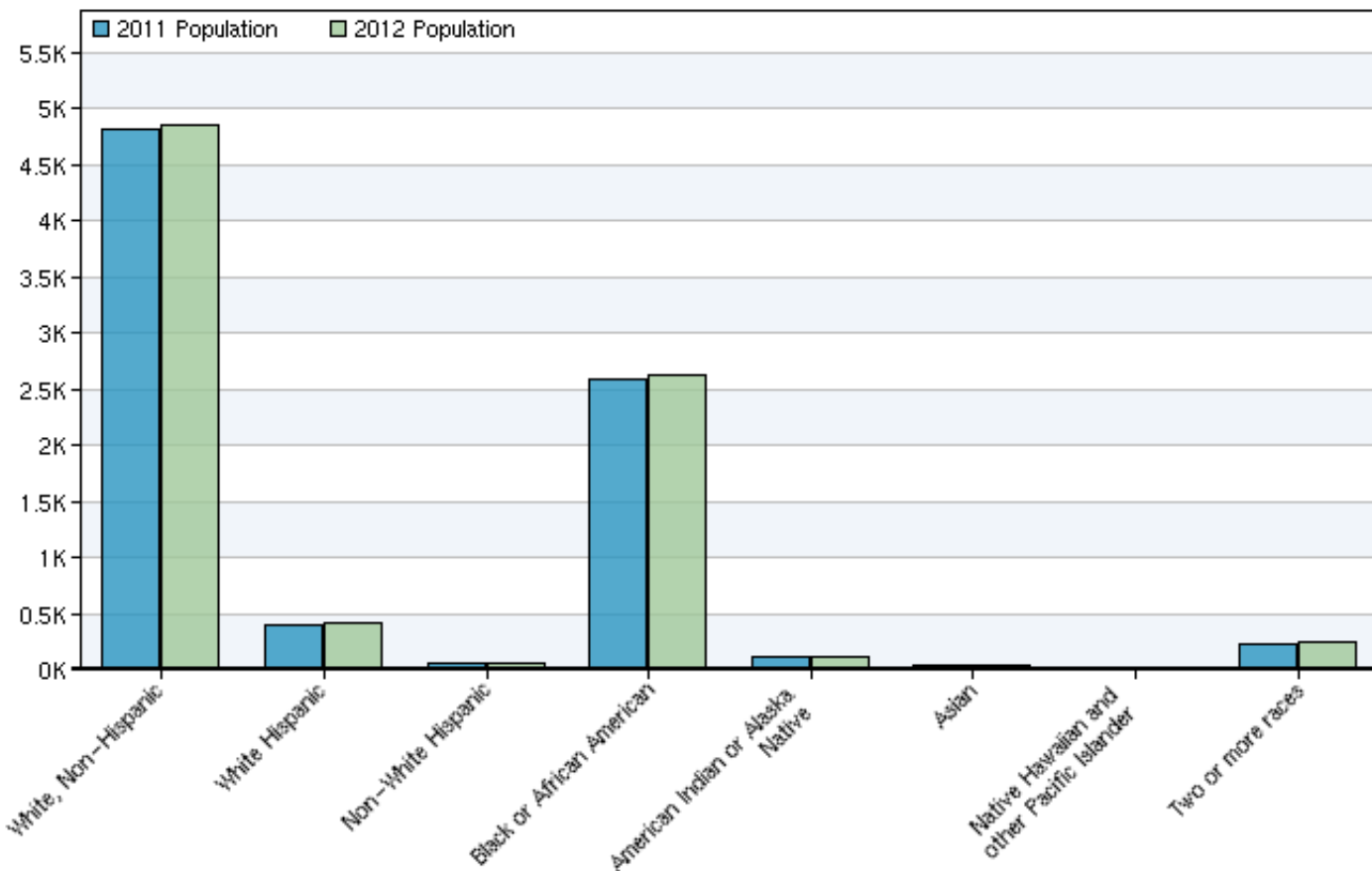
2011 Race/Ethnicity Breakdown



Ethnicity	2011 Population	% of Region
White, Non-Hispanic	4,815	58.40%
White Hispanic	400	4.85%
Non-White Hispanic	55	0.67%
Black or African American	2,589	31.40%
American Indian or Alaska Native	118	1.43%
Asian	33	0.40%
Native Hawaiian and other Pacific Islander	2	0.02%
Two or more races	233	2.83%

Source: EMSI Complete Employment - 2011.4

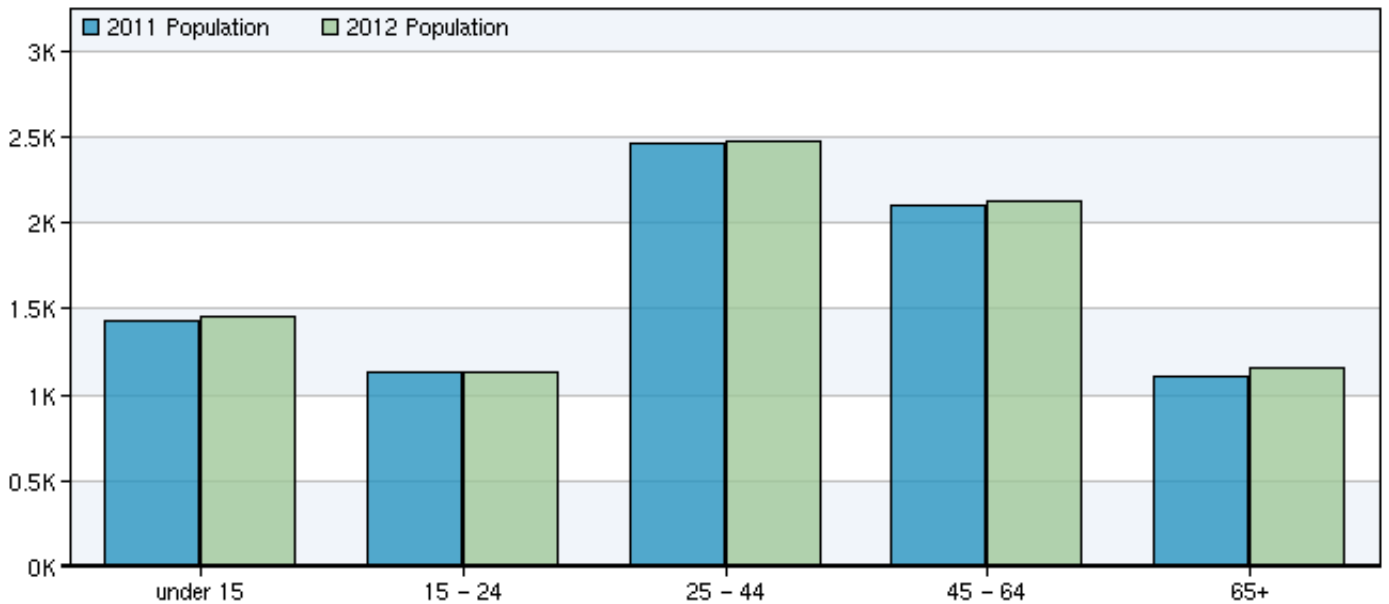
2011 - 2012 Race/Ethnicity Size and Growth



Race/Ethnicity	2011 Population	2012 Population	Change	% Change
White, Non-Hispanic	4,815	4,859	44	1%
White Hispanic	400	412	12	3%
Non-White Hispanic	55	57	2	4%
Black or African American	2,589	2,627	38	1%
American Indian or Alaska Native	118	120	2	2%
Asian	33	34	1	3%
Native Hawaiian and other Pacific Islander	2	2	0	0%
Two or more races	233	237	4	2%
Total	8,245	8,349	104	1%

Source: EMSI Complete Employment - 2011.4

2011 - 2012 Age Size and Growth



Age	2011 Population	2012 Population	Change	% Change
under 15	1,434	1,456	22	2%
15 - 24	1,136	1,131	-5	0%
25 - 44	2,461	2,480	19	1%
45 - 64	2,105	2,124	19	1%
65+	1,109	1,158	49	4%
Total	8,245	8,349	104	1%

Source: EMSI Complete Employment - 2011.4

Data Sources and Calculations

Industry Data

In order to capture a complete picture of industry employment, EMSI basically combines covered employment data from Quarterly Census of Employment and Wages (QCEW) produced by the Department of Labor with total employment data in Regional Economic Information System (REIS) published by the Bureau of Economic Analysis (BEA), augmented with County Business Patterns (CBP) and Nonemployer Statistics (NES) published by the U.S. Census Bureau. Projections are based on the latest available EMSI industry data, 15-year past local trends in each industry, growth rates in statewide and (where available) sub-state area industry projections published by individual state agencies, and (in part) growth rates in national projections from the Bureau of Labor Statistics.

Occupation Data

Organizing regional employment information by occupation provides a workforce-oriented view of the regional economy. EMSI's occupation data are based on EMSI's industry data and regional staffing patterns taken from the Occupational Employment Statistics program (U.S. Bureau of Labor Statistics). Wage information is partially derived from the American Community Survey. The occupation-to-program (SOC-to-CIP) crosswalk is based on one from the U.S. Department of Education, with customizations by EMSI.

Demographic Data

The demographic data in this report is compiled from several sources using a specialized process. Sources include US Census Bureau annual estimates, birth and mortality rates from the US Health Department, and projected regional job growth.

State Data Sources

This report uses state data from the following agencies: Florida Department of Economic Opportunity.

ZIP Code Data Disclaimer

Due to a lack of source data at the ZIP code level, EMSI's ZIP-level estimates can be less accurate when looking at a small number of ZIP codes. This is especially likely to occur in rural areas.